

LAYOUT & MEASURING

- 1) Walk area to be fenced in. Check for pool equipment and utility lines.
- 2) You are ready to stake out the fence. Hammer stakes into place of actual fence placement. Use 72½" on center measurements for Residential & Ultra, and 72¾" for Industrial & Heavy Industrial if possible. If you cannot, don't worry! Any section may be cut to fit. Follow these recommendations when staking out your gate. If you have a 4' gate, set post for a 4' opening. If you have a double gate, set the opening according to the gate size. For example, if you have an 8' double, set posts for an 8' opening.

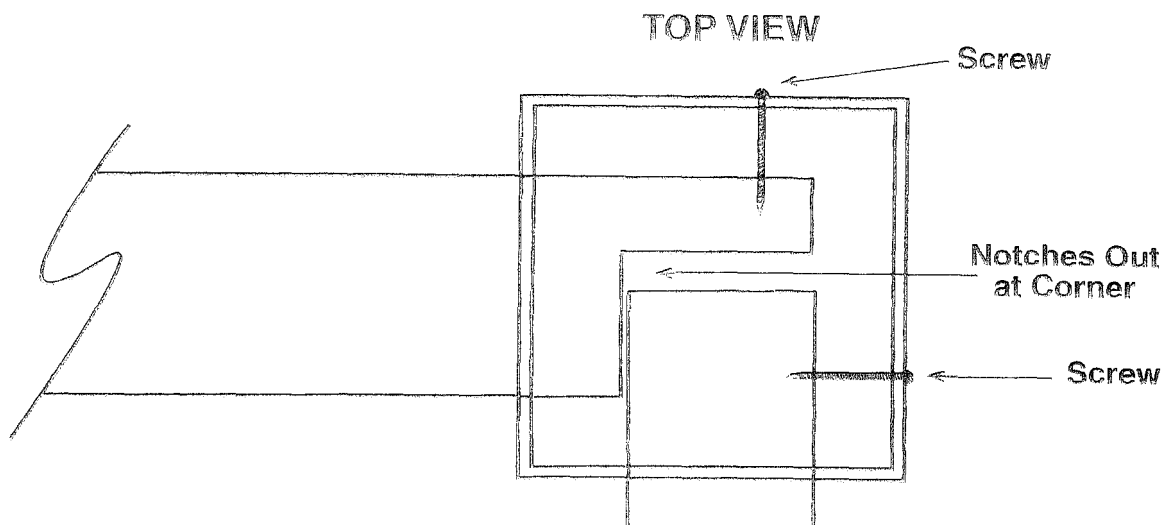
*****ALWAYS DETERMINE GATE SWING, MAKE SURE YOU HAVE CLEARANCE!!!**

- 3) If there are grade changes, indicate highs and lows.
- 4) Make a sketch of your layout, and fax it. Ultra will give you a complete breakdown.

*****ALWAYS LEAVE STAKES IN FOR YOUR INSTALLATION CREW!!!**

INSTALLATION GUIDE

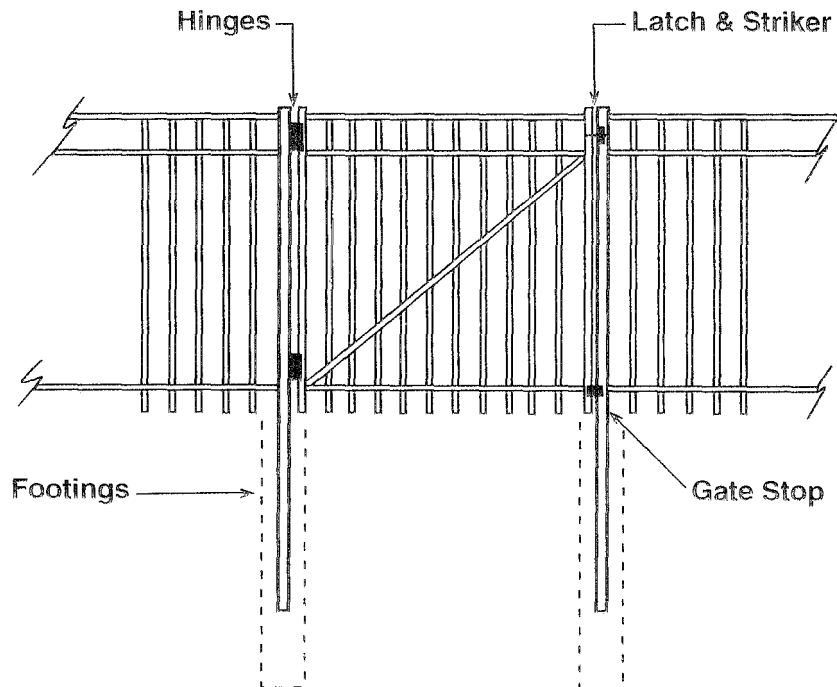
- 1) Always layout your entire fence before starting; check for items on packing list.
- 2) Using a string line, layout your entire fence line. The string will be your straight edge.
- 3) Mark the location of the holes. Mark the holes on center. The key to running a nice fence is for the holes to line up with the string line.
- 4) Dig your holes 36" to 42" deep (depending on your part of the country) and 6" wide.
- 5) Start by attaching one section of fence to the post, slide the panel into the notched end of the post and put 1" self tapping screw into the pre-drilled pilot hole.
- 6) Level the post and pour your mixed concrete into the hole. The post should always be leveled off your string line. Never jump ahead, always 1 panel and 1 post at a time. Leave the concrete 3" short at the top of the hole. Now kick dirt on top of the hole and pack in tight. This will help hold the fence level. Keep a 2" block under the fence to hold the grade heights.
- 7) Now that you've completed the line, go back and level; in and out and up and down. If you are following the grade, stand back along the fence and adjust the fence up or down to match the grade.
- 8) If your line ended with a corner, the next panel must be notched to fit into the post. (See diagram #1)
- 9) After installing all the fence and leveling your gate posts it's time to hang the gates.



INSTALLING THE GATES

- 1) Make sure your gate posts are level and cement is hard.
- 2) Double check layout sheet for the swing direction of the gate.
- 3) Install hinges on the cemented gate posts first (low side of the diagonal brace of the gate is side hinges go on), using 1" long self tapping screws.
- 4) Now bring in the gate. Center the gate in the opening and put one screw in each hinge. This is for final adjustment reasons.
- 5) Now put on gravity latch or Magna-Latch.
- 6) Adjust tension in hinges for proper swing of gate.
- 7) If the gate swings good, put the remaining screws in the hinges.

*****DO NOT USE GATE UNTIL CEMENT AROUND POSTS ARE FULLY HARDENED!!!**



TOOLS NEEDED FOR INSTALLATION

- | | |
|---------------------------------|------------------------------------|
| 1) Hand diggers & power digger. | 6) Hacksaw. |
| 2) 100' tape measure. | 7) Screw Gun & Phillips head tips. |
| 3) Tin snips. | 8) Hammer. |
| 4) Levels. | 9) Pliers. |
| 5) String line. | |